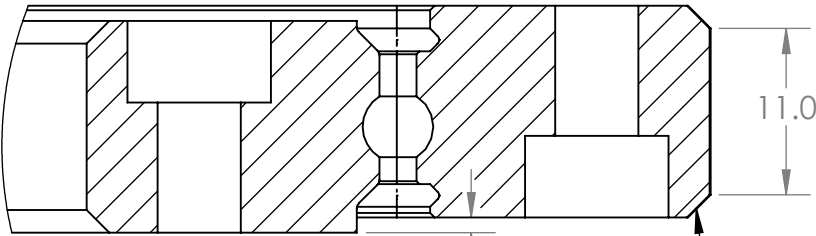


REVISIONS				
ZONE	REV.	DESCRIPTION	DATE	APPROVED
	A	CHANGED BOLT PATTERN ADDED CHAMFER		




DETAIL J
SCALE 2 : 1

2X 1.5±.5 X 45 CHAMFER

NOTES: UNLESS OTHERWISE SPECIFIED

1. MATERIAL:
RACES: AISI 52100 RACES OR EQUIVALENT, Rc 58-62
BALLS: AISI 52100, Rc60-64, Ø 4.76 NOMINAL
SEPARATOR: BRASS, SNAP-OVER TYPE
SEAL: NBR RUBBER WITH METAL REINFORCEMENT
2. STATIC LOADS
RADIAL: 16133 N
AXIAL: 40315 N
MOMENT: 1715 N-m
- DYNAMIC LOADS
RADIAL: 8335 N
AXIAL: 13651 N
MOMENT: 665 N-m
3. LUBRICATION: NLGI #2
4. PRECISION: ABEC 1
5. BEARING TYPE: 4-pt CONTACT BEARING

UNLESS OTHERWISE SPECIFIED:			NAME	DATE	 TPA, FORT MILL SC
DIMENSIONS ARE IN INCHES			DRAWN	JWeaverling	
TOLERANCES		INCHES	MM	APPROVED	DESCRIPTION: TTS2-172-255-15
ANGULAR	±.5 DEG	±.5 DEG			
ONE PLACE DECIMAL	±.050"	±1.00mm			
TWO PLACE DECIMAL	±.010"	±.250mm			
THREE PLACE DECIMAL	±.005"	±.100mm			
INTERPRET GEOMETRIC TOLERANCING PER:				THIRD ANGLE PROJECTION	
MATERIAL					
FINISH					
DO NOT SCALE DRAWING				SIZE DWG. NO.	
				B TTS2-172-255-15	
				REV A	
				SCALE: 1:2	
				WEIGHT:	
				SHEET 1 OF 1	

PROPRIETARY AND CONFIDENTIAL
THE INFORMATION CONTAINED IN THIS DRAWING IS THE SOLE PROPERTY OF THE PRECISION ALLIANCE (TPA) LOCATED IN FORT MILL, SOUTH CAROLINA. ANY REPRODUCTION IN PART OR AS A WHOLE WITHOUT THE WRITTEN PERMISSION OF TPA IS PROHIBITED.